

# La Arlesiana. Suite n°1.

G. Bizet

Andante ♩ = 92

Musical score for the first system of 'La Arlesiana. Suite n°1' by G. Bizet. The score is in 4/4 time and includes parts for Glockenspiel, Xylophone, Soprano Metallophone, Alto Metallophone, Bass Metallophone, and Tambourine. The tempo is marked 'Andante' with a quarter note equal to 92 beats per minute. The Glockenspiel part features a melodic line with eighth and sixteenth notes. The Xylophone part plays a similar rhythmic pattern. The metallophone parts provide harmonic support with chords and single notes. The Tambourine part has a steady, rhythmic accompaniment.

Musical score for the second system of 'La Arlesiana. Suite n°1' by G. Bizet. The score is in 4/4 time and includes parts for Glockenspiel (Glk.), Xylophone (Xyl.), Soprano Metallophone (SM), Alto Metallophone (AM), Bass Metallophone (BM), and Tambourine (Tamb.). A measure rest of 4 measures is indicated at the beginning of the system. The parts continue with the same melodic and rhythmic motifs as in the first system.

8

Glk.  
Xyl.  
SM  
AM  
BM  
Tamb.

Detailed description: This system contains measures 8 through 12. The Glk. part features a melodic line with eighth and sixteenth notes. The Xyl. part plays a rhythmic pattern of eighth notes with a sharp sign. The SM part consists of chords with rests. The AM part has chords with a sharp sign. The BM part has eighth notes with rests. The Tamb. part has a rhythmic pattern of eighth notes.

13

Glk.  
Xyl.  
SM  
AM  
BM  
Tamb.

Detailed description: This system contains measures 13 through 16. The Glk. part continues its melodic line. The Xyl. part has a more complex rhythmic pattern. The SM part has chords with rests. The AM part has chords with a sharp sign. The BM part has eighth notes with rests. The Tamb. part has a rhythmic pattern of eighth notes.

# La Arlesiana. Suite n°1.

G. Bizet

Andante ♩ = 92



# La Arlesiana. Suite n°1.

G. Bizet

Andante ♩ = 92



# La Arlesiana. Suite n°1.

G. Bizet

Andante ♩ = 92



11

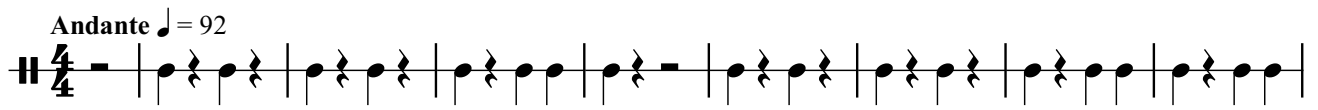






# La Arlesiana. Suite n°1.

G. Bizet



9

