

ROMANCE

Serenata Nocturna

Mozart

andante $\text{♩} = 70$

Soprano Glockenspiel

Alto Glockenspiel

Soprano Metallophone

Alto Metallophone

Soprano Xylophone

Alto Xylophone

Bass Metallophone

5

SG

AG

SM

AM

SX

AX

BM

10

SG
AG
SM
AM
SX
AX
BM

f

f

f

f

f

f

f

Detailed description: This block contains the musical notation for measures 10 through 14. It features seven staves labeled SG, AG, SM, AM, SX, AX, and BM. Measures 10 and 11 show rests for all parts. In measure 12, the SG, AG, SM, and AM staves begin with a forte (*f*) dynamic. The SM and AM staves have a *f* dynamic marking. The SX, AX, and BM staves also begin in measure 12, with SX and AX having a *f* dynamic marking. The BM staff has a *f* dynamic marking. The music continues through measures 13 and 14.

15

SG
AG
SM
AM
SX
AX
BM

Detailed description: This block contains the musical notation for measures 15 through 18. It features the same seven staves as the previous block. In measure 15, the SG, AG, SM, and AM staves play a melodic line. The SX, AX, and BM staves play a rhythmic accompaniment. The music concludes in measure 18 with a double bar line.

ROMANCE

Serenata Nocturna

Mozart

andante ♩ = 70

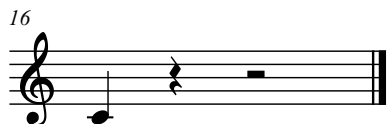


ROMANCE

Serenata Nocturna

Mozart

andante ♩ = 70

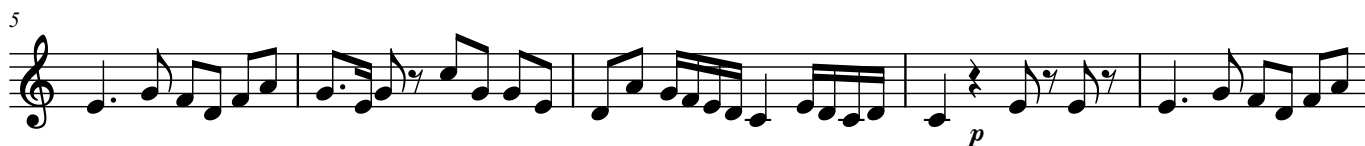


ROMANCE

Serenata Nocturna

Mozart

andante ♩ = 70



ROMANCE

Serenata Nocturna

Mozart

andante ♩ = 70

p *f*

5

p

10

f

15

||

ROMANCE

Serenata Nocturna

Mozart

andante ♩ = 70

p *f*

9

p *f*

ROMANCE

Serenata Nocturna

Mozart

andante ♩ = 70

f *f*

14

ROMANCE

Serenata Nocturna

Mozart

andante ♩ = 70

