

# Serenata Nocturna

Mozart

allegro ♩ = 120

*f*

Soprano Glockenspiel

Alto Glockenspiel

Soprano Metallophone

Alto Metallophone

Alto Xylophone

Soprano Xylophone

Bass Metallophone

6

SG

AG

SM

AM

AX

SX

BM

10

SG  
AG  
SM  
AM  
AX  
SX  
BM

This musical system contains measures 10 through 13. It features seven staves labeled SG, AG, SM, AM, AX, SX, and BM. The SG and AG staves have a treble clef and a key signature of one flat. The SM, AM, and BM staves have a bass clef. The AX and SX staves have a treble clef. The music consists of rhythmic patterns and rests across the measures.

14

SG  
AG  
SM  
AM  
AX  
SX  
BM

This musical system contains measures 14 through 17. It features the same seven staves as the previous system. The music continues with rhythmic patterns and rests, ending with a double bar line at the end of measure 17.

# Serenata Nocturna

Mozart

allegro ♩ = 120



# Serenata Nocturna

Mozart

allegro ♩ = 120



# Serenata Nocturna

Mozart



# Serenata Nocturna

Mozart

allegro ♩ = 120



# Serenata Nocturna

Mozart

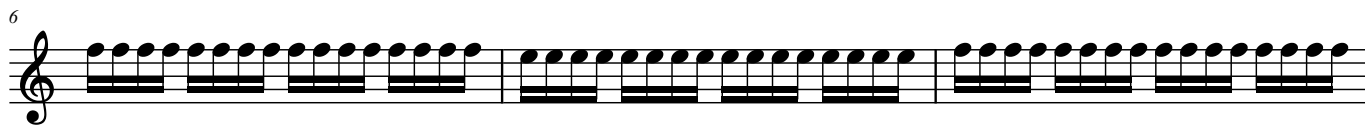
allegro ♩ = 120



# Serenata Nocturna

Mozart

allegro ♩ = 120





# Serenata Nocturna

Mozart

allegro ♩ = 120

*f*

6

6

13

13